

VARICOSITY OF THE COMMUNICATING VEIN BETWEEN THE LEFT RENAL VEIN AND THE LEFT ASCENDING LUMBAR VEIN

Luísa Amado Costa^{*1}, André Peixoto¹, Luís Vítor¹, José Fonseca Santos¹

¹Service of General Image, Centro Hospitalar Universitário Lisboa Norte, EPE

*Corresponding author: al30costa@gmail.com

32 years-old female patient presented with lumbar pain. Computed tomography revealed varicosity of the communicating vein between the left renal vein and the left ascending lumbar vein. This entity may pose

technical difficulties during aortoiliac surgeries and renal surgeries as iatrogenic injury of this vessel may cause life-threatening retroperitoneal hemorrhage.

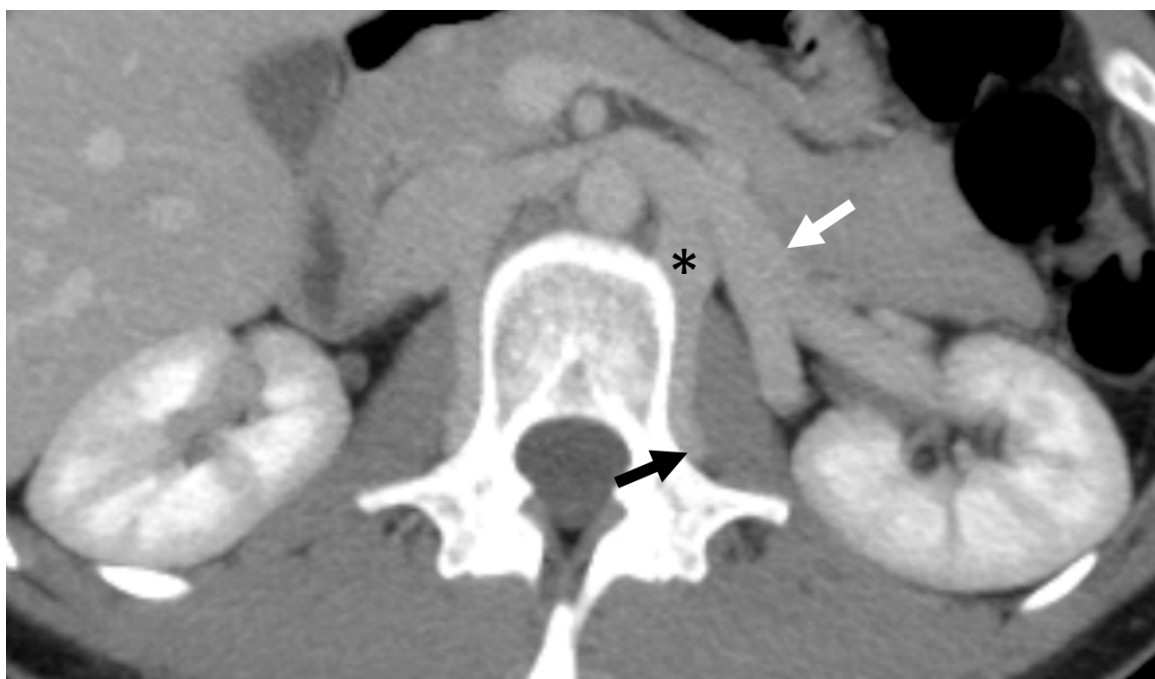


Figure 1

Axial contrast-enhanced computed tomography image shows the ectatic communicating vein (*) between the left renal vein (white arrow) and the left ascending lumbar vein (black arrow).



Figure 2

Sagittal contrast-enhanced computed tomography image shows the ectatic communicating vein () between the left renal vein (white arrow) and the left ascending lumbar vein (black arrow).*