

ENDOBRONCHIAL TUBERCULOSIS

Joana Martins¹, Carlos Carvalho¹, Francisco Freitas², Paula Monteiro²

¹ Pulmonology Department – Centro Hospitalar Universitário Lisboa Norte, Lisboa, Portugal

² Interventional Pulmonology Unit – Centro Hospitalar Universitário Lisboa Norte, Lisboa, Portugal

Videobronchofibroscopy of a Chinese 74-year-old woman showing abundant whitish plaques in the vocal cords with antraconic lesions extending throughout the tracheal pathway and bronchial trees, predominantly in

the upper left lobe, compatible with Endobronchial Mycobacterium tuberculosis. The evolution and prognosis varies, from complete resolution to severe endobronchial stenosis.

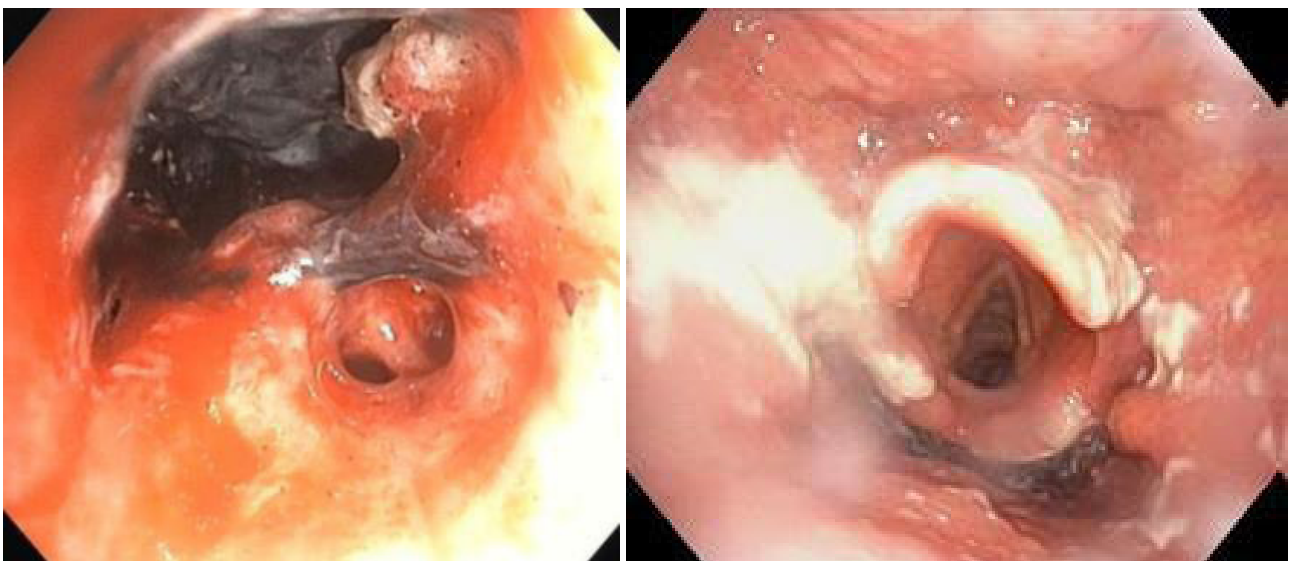


Figure 1