

IATROGENIC INJURY AFTER CARDIAC SURGERY WITHIN INTENSIVE CARE CONTEXT

Marta Coelho¹, Alexandre Caldeira¹, José Diogo Albuquerque¹, Hugo Côrte-Real²

¹Serviço de Anestesiologia, Centro Hospitalar Universitário Lisboa Norte, Lisboa, Portugal
²Serviço de Cirurgia Cardio-Torácica, Centro Hospitalar Universitário Lisboa Norte, Lisboa, Portugal

*Contacto Autor: marta.coelho.162@gmail.com

65 year-old man, admitted in ICU post cardiac surgery. Pleural drains removed in postoperative. Chest radiography showed bilateral pneumothorax, apparently extensive, needing drainage, with no clinical correlation. Exam repeated in better technical conditions eliminating skin folds: it confirms small pneumothorax with no need of pleural drainage, avoiding an invasive technique.

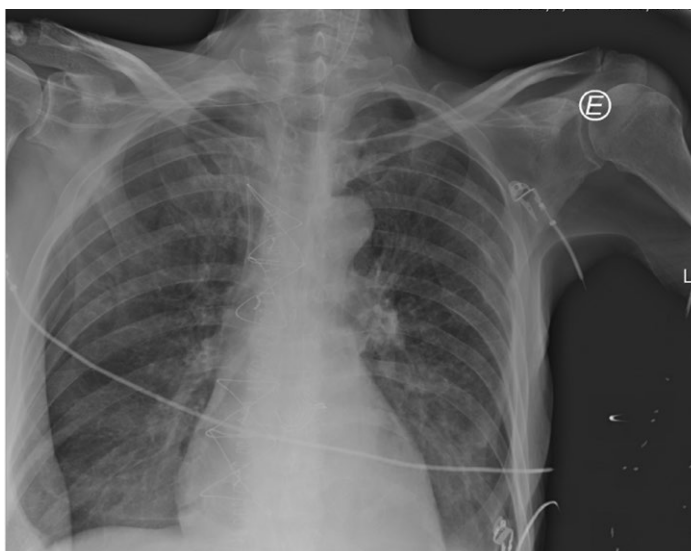


Figure 1

Chest radiography post bilateral pleural drains removal.



Figure 2

Chest radiography with skin folds removal highlighting small pneumothorax.